



# Beaufort County Public Works Stormwater Infrastructure Project Summary

**Project Summary:** Capers Island Circle

**Activity:** Routine/Preventive Maintenance

**Narrative Description of Project:**

Project improved 680 L.F. of drainage system. Cleaned out 135 L.F. of roadside ditch and 545 L.F. channel. Jetted (1) access pipe and (1) crossline pipe. Replaced (1) crossline pipe. Installed (1) driveway pipe and rip rap for erosion control.

**Completion:** Nov-14

2015-527 / Capers Island Circle	Labor Hours	Labor Cost	Equipment Cost	Material Cost	Contractor Cost	Indirect Labor	Total Cost
AUDIT / Audit Project	0.5	\$10.23	\$0.00	\$0.00	\$0.00	\$6.62	\$16.85
CLPJT / Crossline Pipe - Jetted	12.0	\$268.06	\$132.96	\$48.55	\$0.00	\$179.46	\$629.03
DPINS / Driveway Pipe - Installed	40.0	\$841.70	\$188.25	\$542.99	\$0.00	\$551.40	\$2,124.34
HAUL / Hauling	20.0	\$432.60	\$214.00	\$920.99	\$0.00	\$288.40	\$1,855.99
HYDR / Hydroseeding	10.0	\$222.20	\$18.10	\$96.85	\$0.00	\$133.35	\$470.50
ONJV / Onsite Job Visit	4.0	\$126.04	\$14.48	\$17.94	\$0.00	\$85.40	\$243.86
PI / Project Inspection	2.0	\$88.54	\$7.24	\$5.98	\$0.00	\$67.92	\$169.68
PRRECON / Project Reconnaissance	2.0	\$59.68	\$7.24	\$8.97	\$0.00	\$36.46	\$112.35
RSDCL / Roadside Ditch - Cleanout	40.0	\$783.00	\$157.84	\$83.17	\$0.00	\$498.60	\$1,522.61
STAGING / Staging Materials	39.0	\$823.52	\$100.24	\$90.36	\$0.00	\$540.86	\$1,554.98
TRAIN / Training	20.0	\$385.60	\$0.00	\$0.00	\$0.00	\$0.00	\$385.60
<b>2015-527 / Capers Island Circle Sub Total</b>	<b>189.5</b>	<b>\$4,041.17</b>	<b>\$840.35</b>	<b>\$1,815.80</b>	<b>\$0.00</b>	<b>\$2,388.46</b>	<b>\$9,085.78</b>
<b>Grand Total</b>	<b>189.5</b>	<b>\$4,041.17</b>	<b>\$840.35</b>	<b>\$1,815.80</b>	<b>\$0.00</b>	<b>\$2,388.46</b>	<b>\$9,085.78</b>

Before



During



After





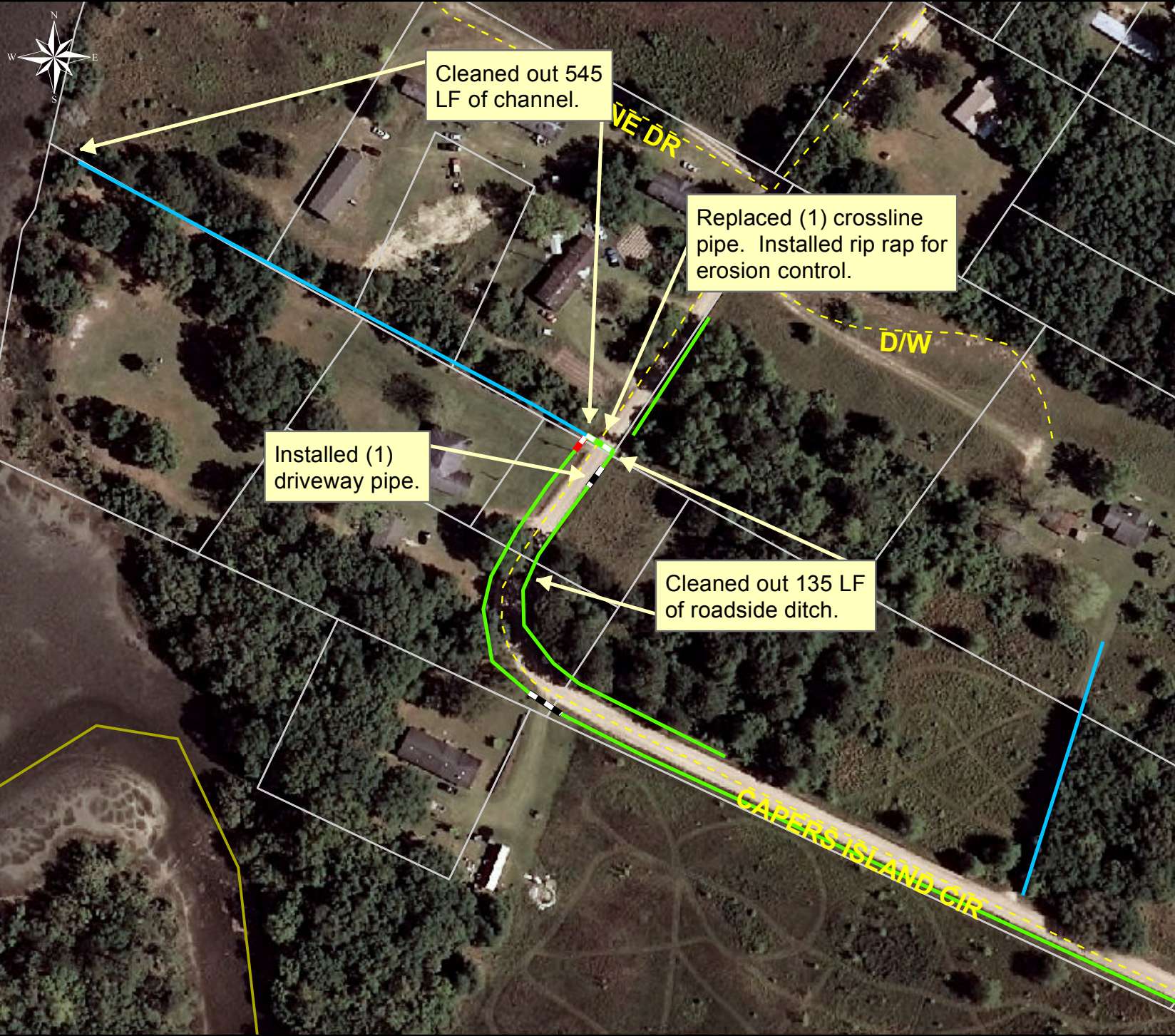
**Project: Capers Island Circle Map 1**

**Activity: Routine/ Preventive Maintenance**

**Project #: 2015-527**

**Township: St. Helena Island**

**Completed: November 2014**



**Legend**

**TYPE**

	River
	Creek/Stream
	River/Creek/Marsh BANK
	Channel (fka Outfall)
	Channel Pipe
	Lateral
	Lateral Pipe
	Roadside
	Roadside Pipe
	Road Pipe
	Crossline Pipe
	Driveway Pipe
	Access Pipe
	Bleeder Pipe
	Catch Basin



1 inch = 135 feet



**Project: Capers Island Circle Map 2**

**Activity: Vacuum Truck**

**Project #: 2015-527**

**Township: St. Helena Island**

**Completed: November 2014**



Legend	
TYPE	
	River
	Creek/Stream
	River/Creek/Marsh BANK
	Channel (fka Outfall)
	Channel Pipe
	Lateral
	Lateral Pipe
	Roadside
	Roadside Pipe
	Road Pipe
	Crossline Pipe
	Driveway Pipe
	Access Pipe
	Bleeder Pipe
	Catch Basin



1 inch = 135 feet